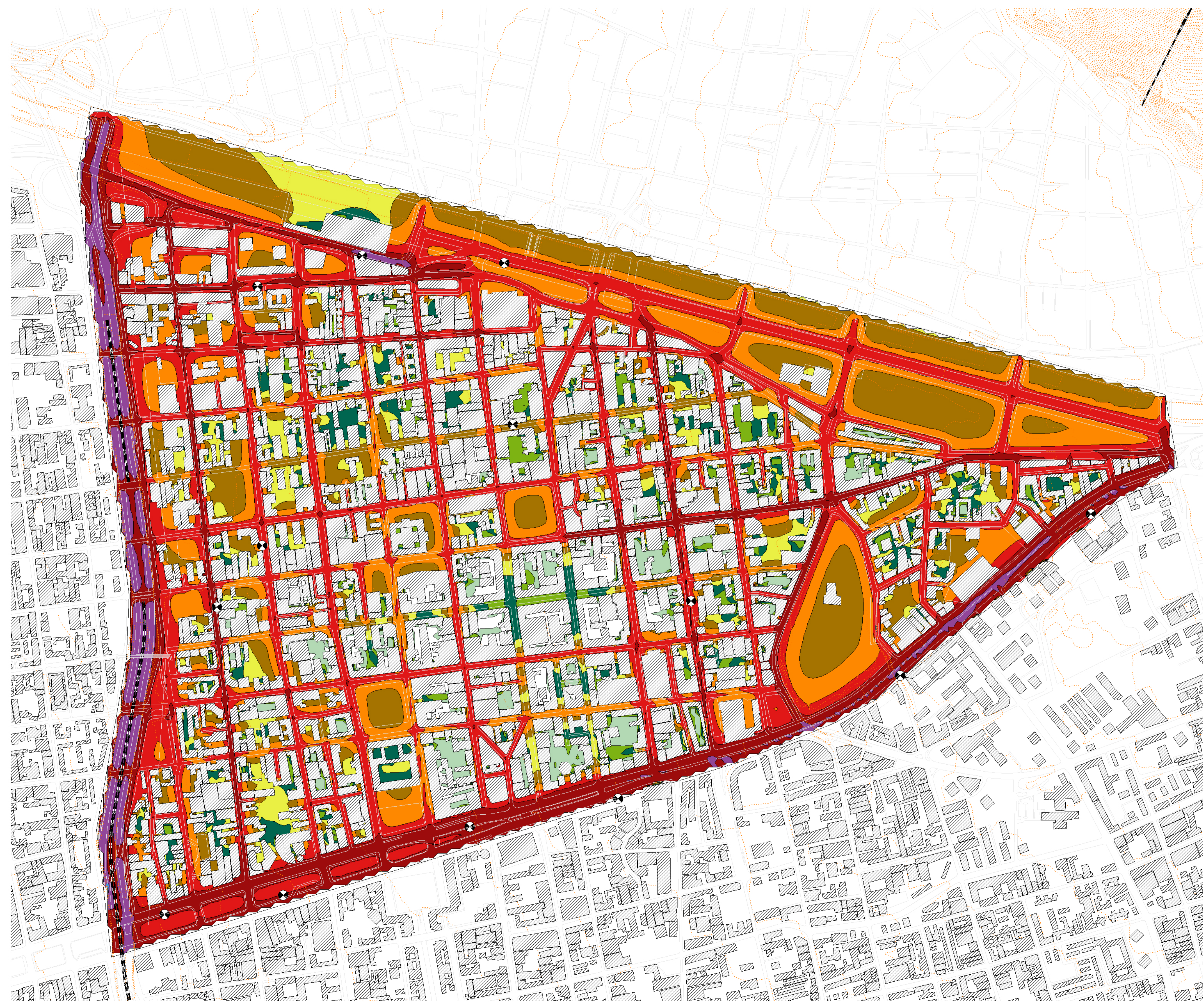


345600 345800 346000 346200 346400 346600 346800 347000 347200 347400 347600 347800 348000 348200 348400

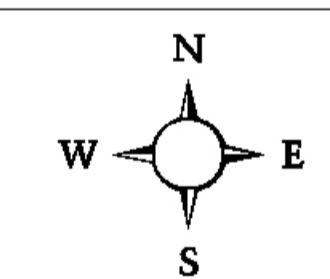
6300000
6299800
6299600
6299400
6299200
6299000
6298800
6298600
6298400
6298200
6298000

6300000
6299800
6299600
6299400



**MAPA DE RUIDO
COMUNA DE SANTIAGO**

Mapa de Niveles Sonoros
Lnoche, altura 4m
Fuente de Ruido Tráfico
Sector Nor-Oriente



Escala 1 : 9000

- ... ≤ 35.0 dB(A)
- $35.0 < \dots \leq 40.0$ dB(A)
- $40.0 < \dots \leq 45.0$ dB(A)
- $45.0 < \dots \leq 50.0$ dB(A)
- $50.0 < \dots \leq 55.0$ dB(A)
- $55.0 < \dots \leq 60.0$ dB(A)
- $60.0 < \dots \leq 65.0$ dB(A)
- $65.0 < \dots \leq 70.0$ dB(A)
- $70.0 < \dots \leq 75.0$ dB(A)
- $75.0 < \dots \leq 80.0$ dB(A)
- $80.0 < \dots$ dB(A)

Consultor del Proyecto:
Universidad Austral de Chile
Instituto de Acústica



345600 345800 346000 346200 346400 346600 346800 347000 347200 347400 347600 347800 348000