

344000

344500

345000

345500

346000

346500

347000

6298500

6298500

6298000

6298000

6297500

6297500

6297000

6297000

6296500

6296500

6296000

6296000

6295500

6295500

6295000

6295000

6294500

6294500

6294000

6294000

344000

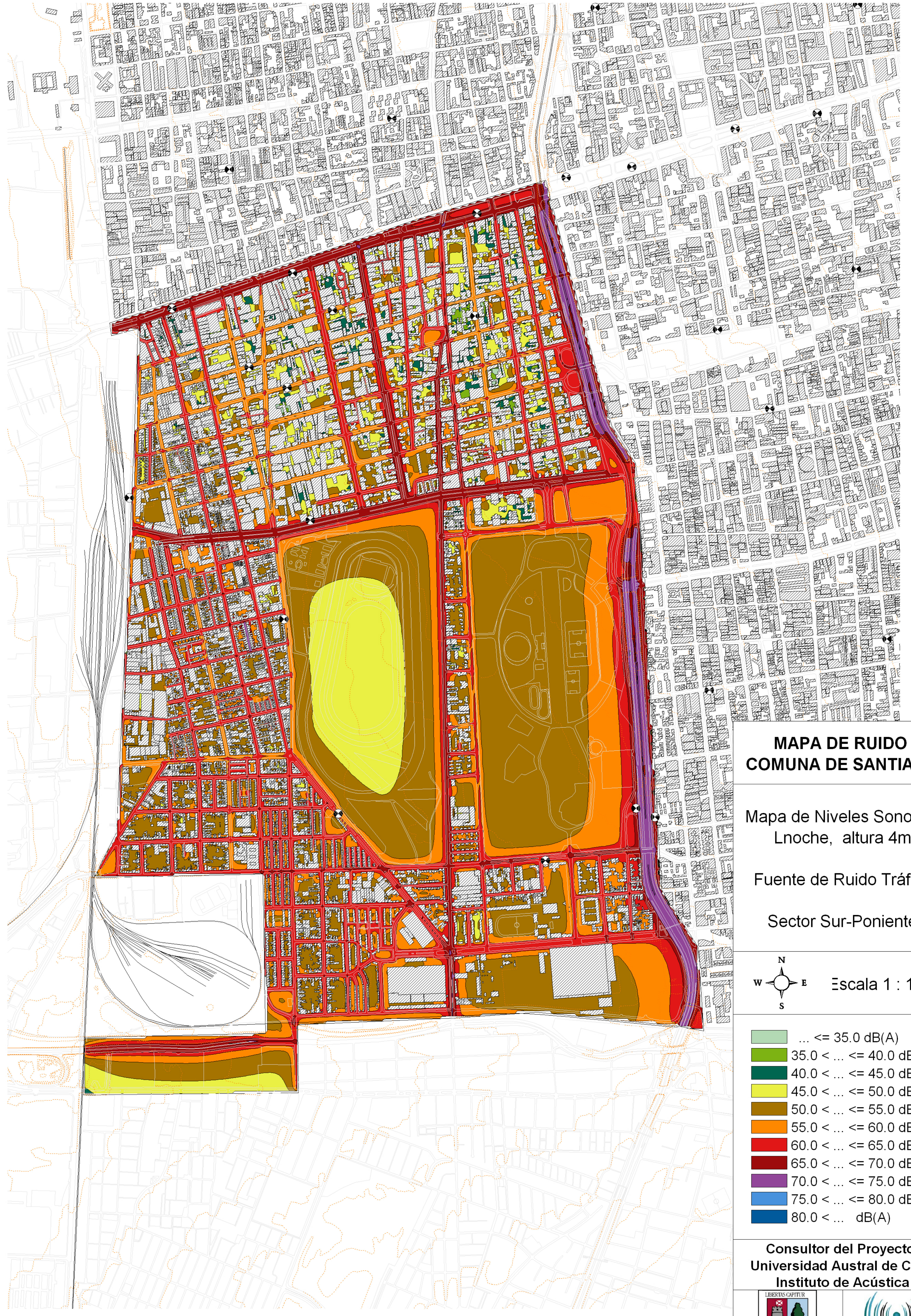
344500

345000

345500

346000

3

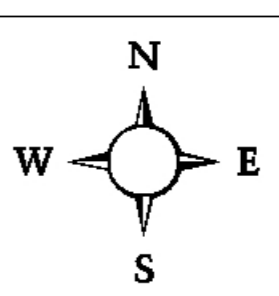


**MAPA DE RUIDO
COMUNA DE SANTIAGO**

Mapa de Niveles Sonoros
Lnoche, altura 4m

Fuente de Ruido Tráfico

Sector Sur-Poniente



Escala 1 : 10000

- ... ≤ 35.0 dB(A)
- $35.0 < \dots \leq 40.0$ dB(A)
- $40.0 < \dots \leq 45.0$ dB(A)
- $45.0 < \dots \leq 50.0$ dB(A)
- $50.0 < \dots \leq 55.0$ dB(A)
- $55.0 < \dots \leq 60.0$ dB(A)
- $60.0 < \dots \leq 65.0$ dB(A)
- $65.0 < \dots \leq 70.0$ dB(A)
- $70.0 < \dots \leq 75.0$ dB(A)
- $75.0 < \dots \leq 80.0$ dB(A)
- $80.0 < \dots$ dB(A)

Consultor del Proyecto:
Universidad Austral de Chile
Instituto de Acústica

